



INFORMATION AND USES

The Simple Truths and Uses

By Allen Roberts

One of the most useful relay products in the market today and underutilized item in an electrician's basket is the Zelio smart relay. These relays were designed with the regular electrician in mind while also being useful to the OEM machine builder and the industrial plant electrician. Schneider Electric launched this product in 2000 with the Zelio model 1 and followed up with the model 2 a few years later.

Some of the applications I have been involved in include lunch bell time clocks, end-of-arm controllers, lawn sprinkler timers, lighting timers, and automated displays, just to mention a few. The basic Zelio unit has built-in timers, counters, analog inputs, comparators, and more. This is all accessible on the built-in HMI display or the free software that runs on most modern Windows-based computers. The software includes features ranging from basic relay ladder logic programming to advanced function block programming. It includes a great simulator so you can test your program before you install on the controller.

Zelio comes in two main types: expandable and non-expandable. Each of those categories contain multiple options, from 12VDC to 240VAC, 10 I/O to 26 I/O, and blind

units (no display) to multi-functional display units. Communications in different protocols from serial to Ethernet to wireless are available options. These units come in either relay output rated at 2 amps per pole or 300ma transistor output for higher speed applications. Zelio's modularity makes application limitless.

Water park splash pads: Town of Aurora

Water Falls: 61 City View Drive in Scarborough

Water bottling plant: Huntsville Ontario

Batch Control: Plastics Company Huntsville

Winder Control: Fabric Mill Orangeville

Lunch Bell Timer: Manufacturing Plant Scarborough

Automated Christmas Light Display: Aurora

Conveyor Sorting Line: Mississauga

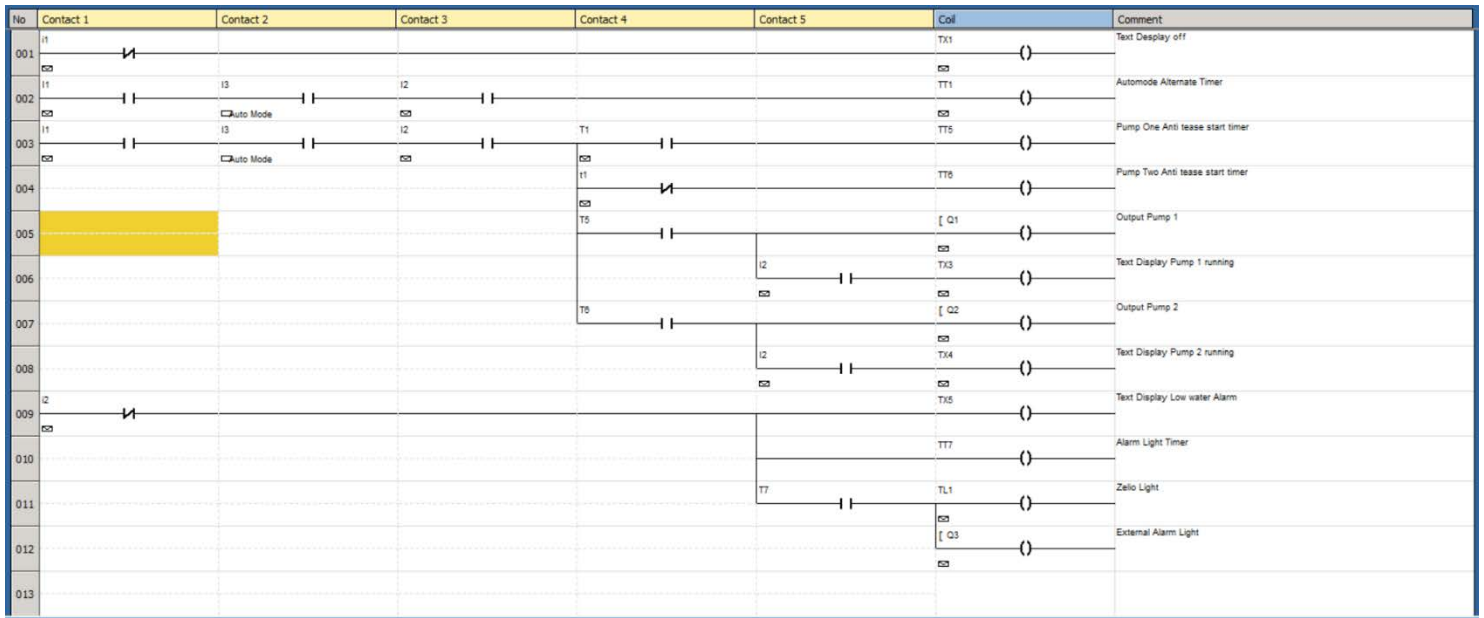
Asphalt Plant Mixing Application: Toronto

Amateur Radio Repeater Control: Holland Landing

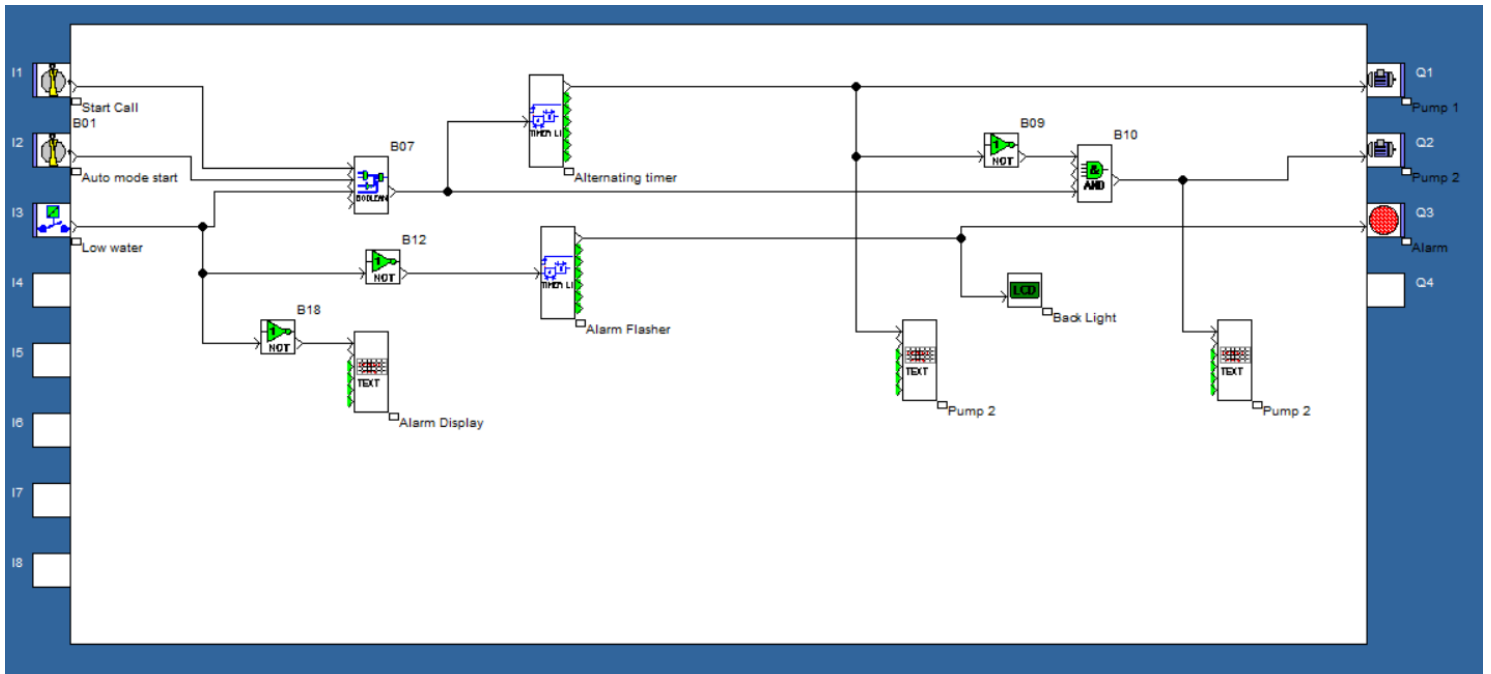
Page 2 has some programming examples.



ZELIO SMART RELAY



Above is a program written in Basic Relay Ladder logic and below the same program in Function Block



For more information please contact one of our sales associates or visit the Schneider Electric Web site

We also stock a couple of different starter packs that complete with the controller, programming cable and software

(Included is a manual)

